



**32 Penhale Drive, Hucknall, Nottingham,
Nottinghamshire NG15 6FH**

£975 pcm

Tel: 0115 9680268



- Modern Semi Detached House
- Driveway & Garage
- Available now
- Popular Location
- Three Bedrooms
- Large Rear Garden

This well-presented three-bedroom semi-detached home offers generous living space, excellent outdoor areas and a peaceful setting, making it an ideal rental for tenants seeking a comfortable and welcoming place to call home.

Situated on a quiet no-through residential road in a highly sought-after area, the property enjoys a rare sense of privacy, with open fields forming the backdrop to the impressive rear garden.

The accommodation comprises a welcoming entrance hallway leading into a spacious open-plan living and dining area, providing ample room for both relaxing and entertaining. The fully fitted kitchen offers good storage and workspace, while a large conservatory to the rear overlooks the garden and provides valuable additional living space that could easily serve as a second sitting area, playroom or home office.

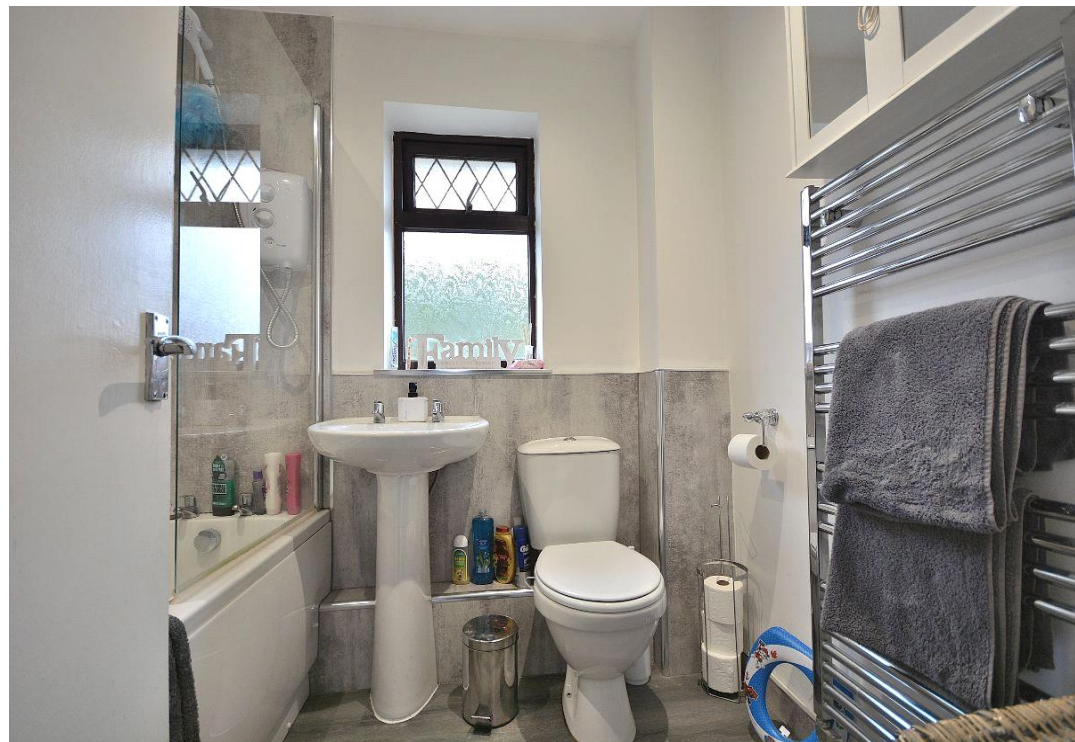
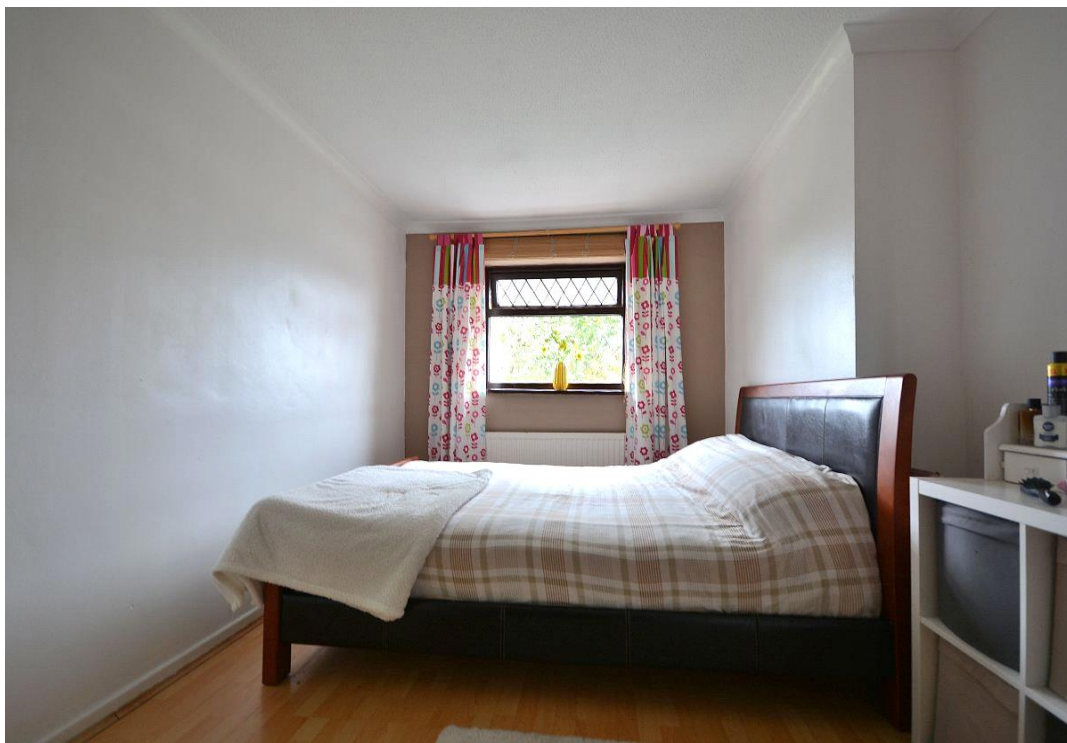
Upstairs, there are three well proportioned bedrooms, including two generous doubles, along with a modern family bathroom.

Externally, the property benefits from a lawned front garden and a private driveway leading to an integral garage, offering useful storage or secure parking. The standout feature is the substantial enclosed rear garden, complete with patio area and expansive lawn, providing plenty of space for outdoor dining, children to play, or simply enjoying the added privacy of the open field views beyond.

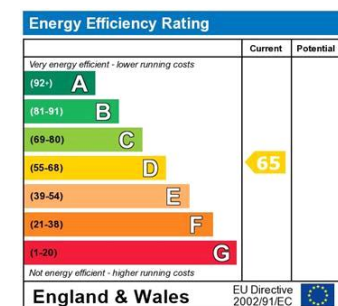
Homes offering this combination of space, setting and practicality are rarely available on the rental market. Early viewing is strongly recommended to avoid missing out.











The energy efficiency rating is a measure of the overall efficiency of a home. The higher the rating the more energy efficient the home is and the lower the fuel bills will be.

Viewing by appointment only
 JMS Sales & Lettings
 32 High Street, Hucknall, Nottingham, Nottinghamshire NG15 7HD
 Tel: 0115 9680268 Email: enquiries@jmslettings.co.uk Website: jmssalesandlettings.co.uk/

