



**9 Antonia Drive, Hucknall, Nottingham,  
Nottinghamshire NG15 8JB**

**£1,300 pcm**

Tel: 0115 9680268



- Master Bedroom with En-Suite
- Three Generous Bedrooms
- Three Story House
- Beautifully Presented
- Driveway & Garage
- Early viewing essential

A beautifully presented family home in a highly sought-after location.

Situated on Papplewick Green, this attractive property offers excellent access to the tram network and Ashfield Industrial Estate, making it ideal for commuters and families alike.

The accommodation is arranged over three floors. The second floor boasts a spacious and impressive master bedroom, complete with a full-sized en suite. On the first floor are two further well-proportioned double bedrooms and a modern family bathroom.

The ground floor features a larger-than-average lounge, along with a generous kitchen diner fitted with upgraded tiled splashbacks. French doors open directly onto a landscaped rear garden, laid mainly to lawn, providing an ideal space for relaxing or entertaining.

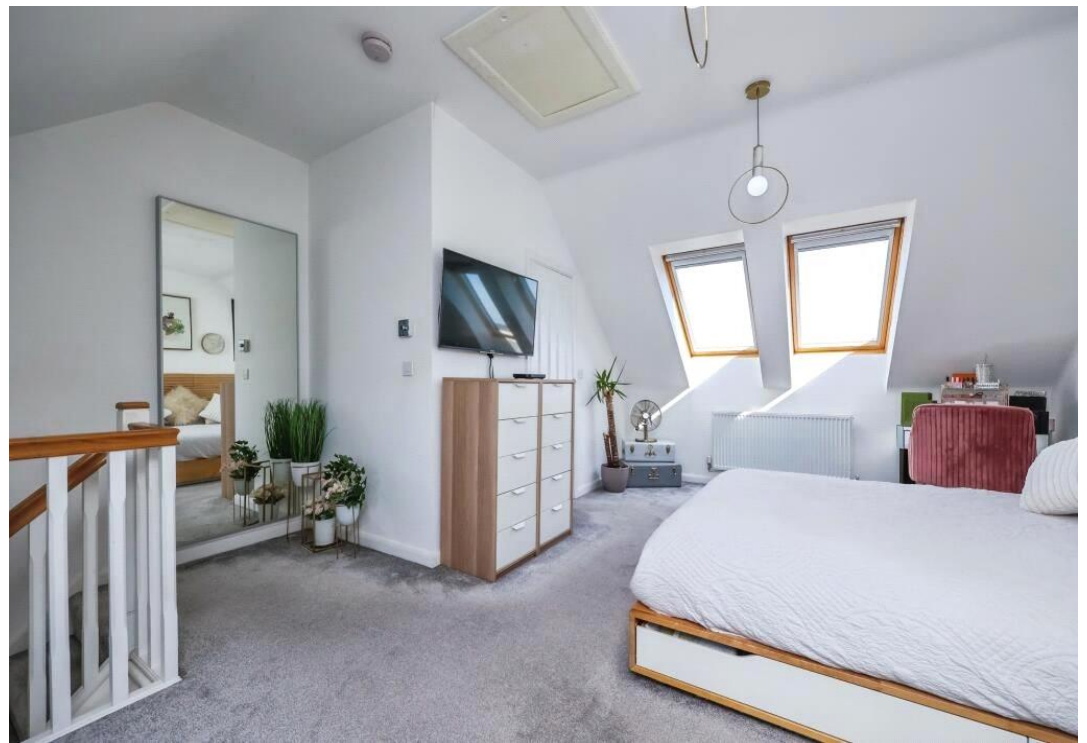
Externally, the property benefits from a driveway offering off-street parking, as well as a detached garage.

Located in a popular residential area close to a range of local amenities and excellent transport links, this home is ideal for families or professionals and early viewing is highly recommended.







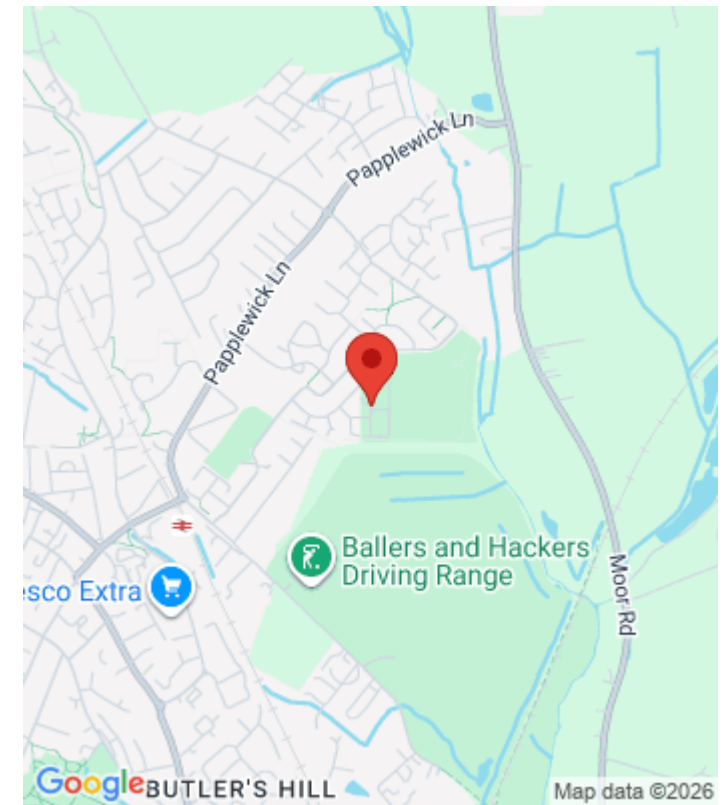












Energy Efficiency Rating		
	Current	Potential
Very energy efficient - lower running costs		
(92-)	A	
(81-91)	B	
(69-80)	C	
(55-68)	D	
(39-54)	E	
(21-38)	F	
(1-20)	G	
Not energy efficient - higher running costs		
England & Wales <small>The energy efficiency rating is a measure of the overall efficiency of a home. The higher the rating the more energy efficient the home is and the lower the fuel bills will be.</small>		
<small>EU Directive 2002/91/EC</small>		

Viewing by appointment only  
 JMS Sales & Lettings  
 32 High Street, Hucknall, Nottingham, Nottinghamshire NG15 7HD  
 Tel: 0115 9680268 Email: [enquiries@jmslettings.co.uk](mailto:enquiries@jmslettings.co.uk) Website: [jmssalesandlettings.co.uk/](http://jmssalesandlettings.co.uk/)

