



**264 Yardley Fields Road, Birmingham, West  
Midlands B33 8RL**

**£1,500 pcm**

Tel: 0115 9680268



- Off-street parking
- Stylish Family Bathroom
- Three Bedroom Family Home
- Two Reception Rooms
- Available now
- Desired Location
- Downstairs Shower Room
- Fitted Kitchen and Utility

We are delighted to offer this spacious and well-presented three-bedroom semi-detached family home to rent, positioned on a generous plot in a highly sought-after location. Designed to suit modern family living, this property offers an impressive amount of space both inside and out.

On the ground floor, the home features a bright and inviting lounge, a separate dining room perfect for family meals or entertaining, and a well-equipped fitted kitchen with ample storage. A useful utility area adds extra convenience, along with a downstairs shower room, ideal for busy households.

Upstairs, you'll find three spacious double bedrooms, each offering comfortable living space, along with a family bathroom and a separate W/C, providing practicality for everyday life.

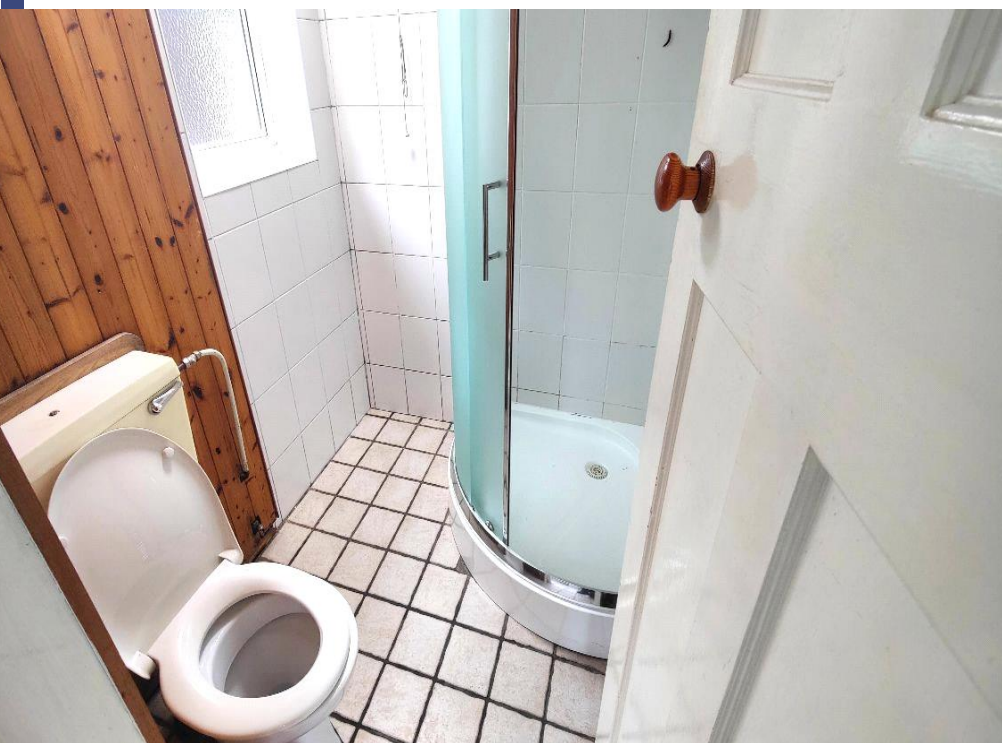
The property is complemented by a well-maintained rear garden, offering a peaceful outdoor retreat for relaxing or play, as well as ample off-road parking to the front.

With its generous layout, desirable location, and excellent suitability for families, this home provides the space, comfort, and flexibility you've been looking for.

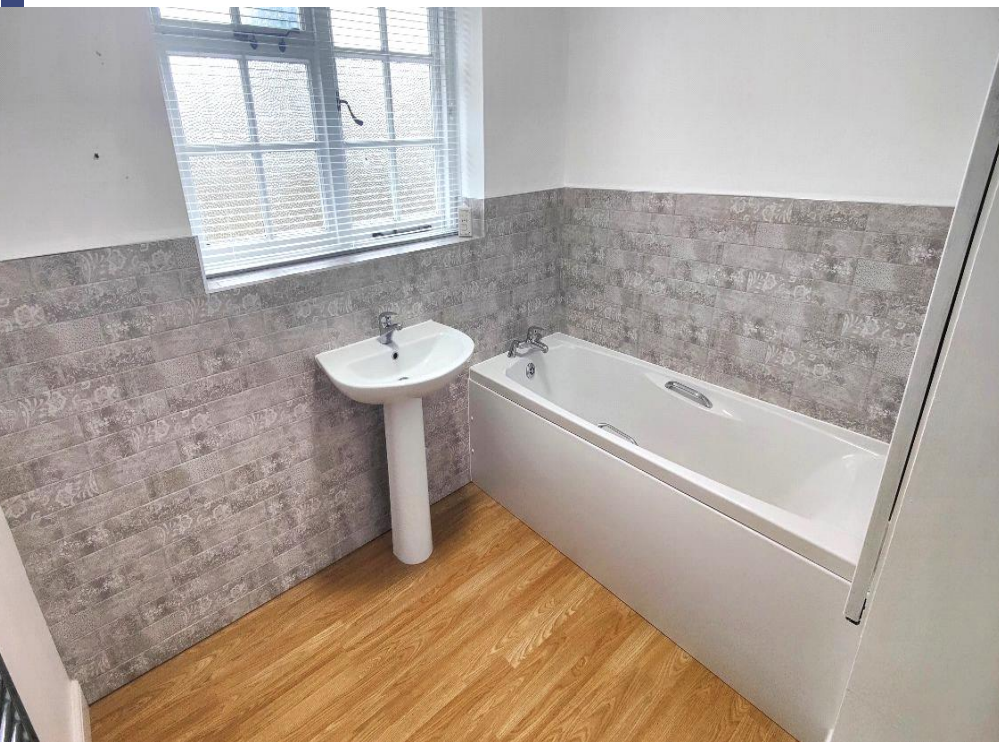




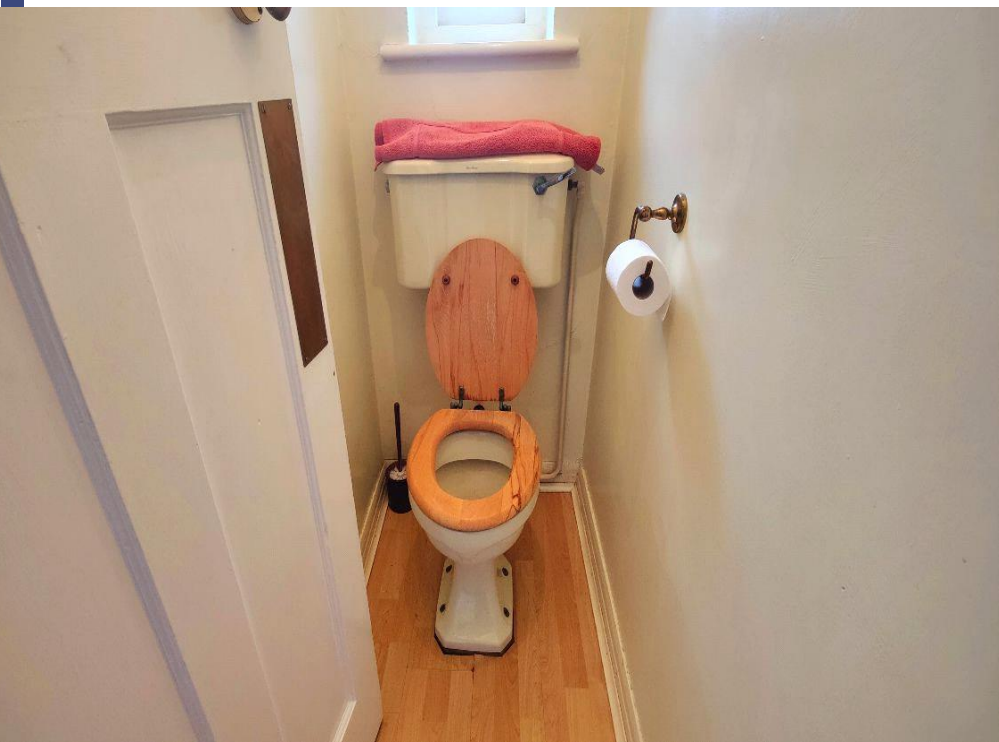




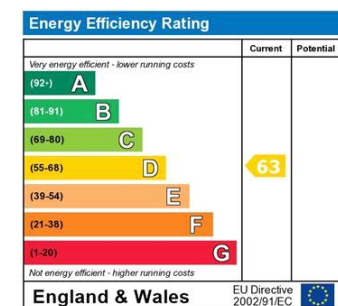












The energy efficiency rating is a measure of the overall efficiency of a home. The higher the rating the more energy efficient the home is and the lower the fuel bills will be.

Viewing by appointment only  
 JMS Sales & Lettings  
 32 High Street, Hucknall, Nottingham, Nottinghamshire NG15 7HD  
 Tel: 0115 9680268 Email: [enquiries@jmslettings.co.uk](mailto:enquiries@jmslettings.co.uk) Website: [jmssalesandlettings.co.uk/](http://jmssalesandlettings.co.uk/)

