



**20 Linton Close, Mansfield,  
Nottinghamshire NG18 3RA**

**£725 pcm**

Tel: 0115 9680268



- Bath with Separate Shower Cubicle
- Downstairs WC
- Parking
- Great Location
- Family Home
- Three Bedrooms
- Large Lounge
- Fitted Kitchen and Utility
- Enclosed Rear Garden

JMS are pleased to market this lovely presented three bedroom family home which is very spacious.

The ground floor consists of large hallway with plenty of storage space, downstairs w.c, utility room, fully fitted kitchen with grey modern units, large spacious lounge/dining area with laminate floor which leads into a large conservatory giving the extra space, french doors into the enclosed easy maintenance rear garden.

The first floor has two double bedrooms, one single bedroom and a modern family bathroom with corner bath and separate shower enclosure.

There are two parking spaces to the front of the property and located in a cul-de-sac.

This would make the perfect family home.

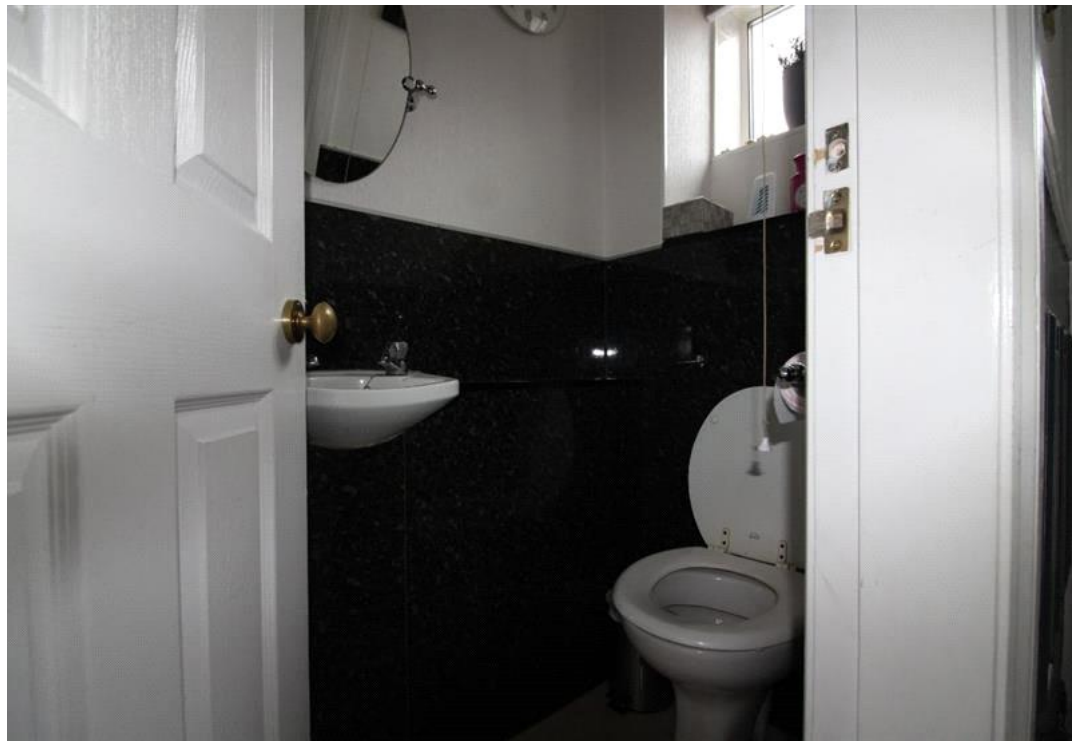
Pets welcome

Available from 1st April 2022

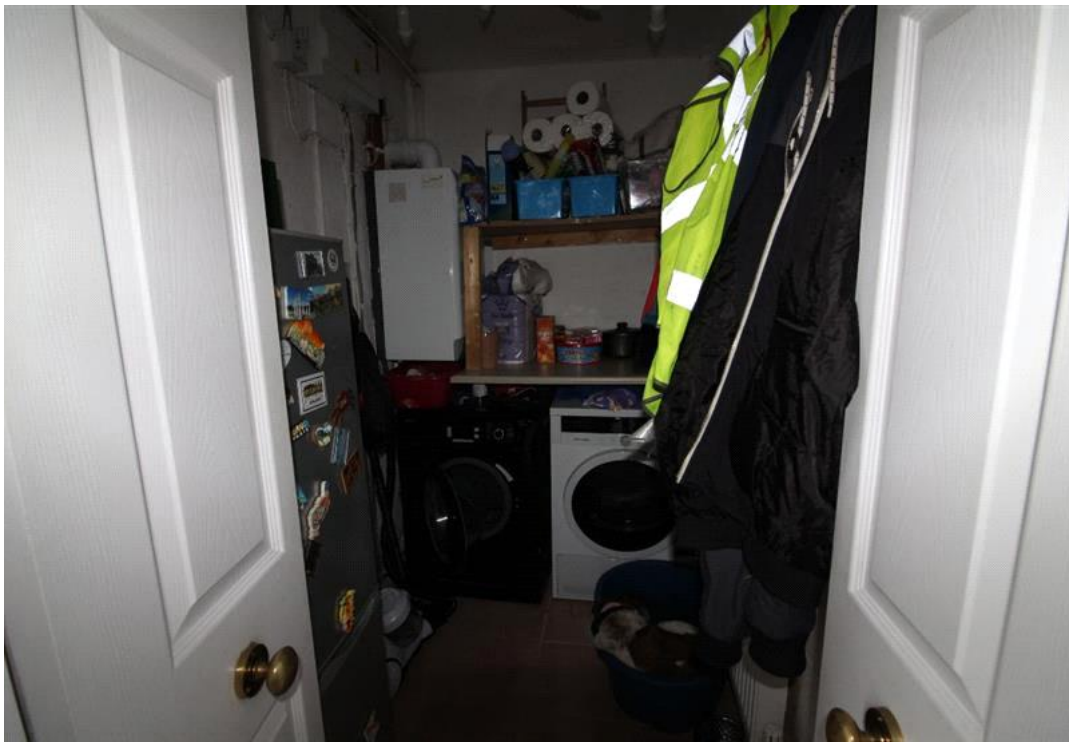






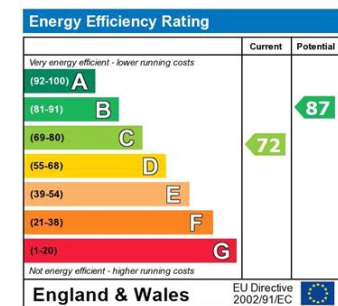












The energy efficiency rating is a measure of the overall efficiency of a home. The higher the rating the more energy efficient the home is and the lower the fuel bills will be.

Viewing by appointment only  
 JMS Property Management  
 32 High Street, Hucknall, Nottingham, Nottinghamshire NG15 7HD  
 Tel: 0115 9680268 Email: [enquiries@jmslettings.co.uk](mailto:enquiries@jmslettings.co.uk) Website: [www.jmslettings.co.uk](http://www.jmslettings.co.uk)

