



**4 Keats Close, Nuthall, Nottingham,
Nottinghamshire NG16 1EQ**

£575 pcm

Tel: 0115 9680268



- Enclosed Rear Garden
- Parking
- New Kitchen and Bathroom
- Beautiful Home
- Decorated Throughout
- Desired Location of Nuthall

A lovely one bedroom town house in a quiet residential cul-de-sac close to the M1 and all amenities.

The property comprises of a porch, brand new fully fitted kitchen, open plan lounge. French Doors into a easily maintained enclosed rear garden.

Fully Fitted Bathroom with double shower enclosure.

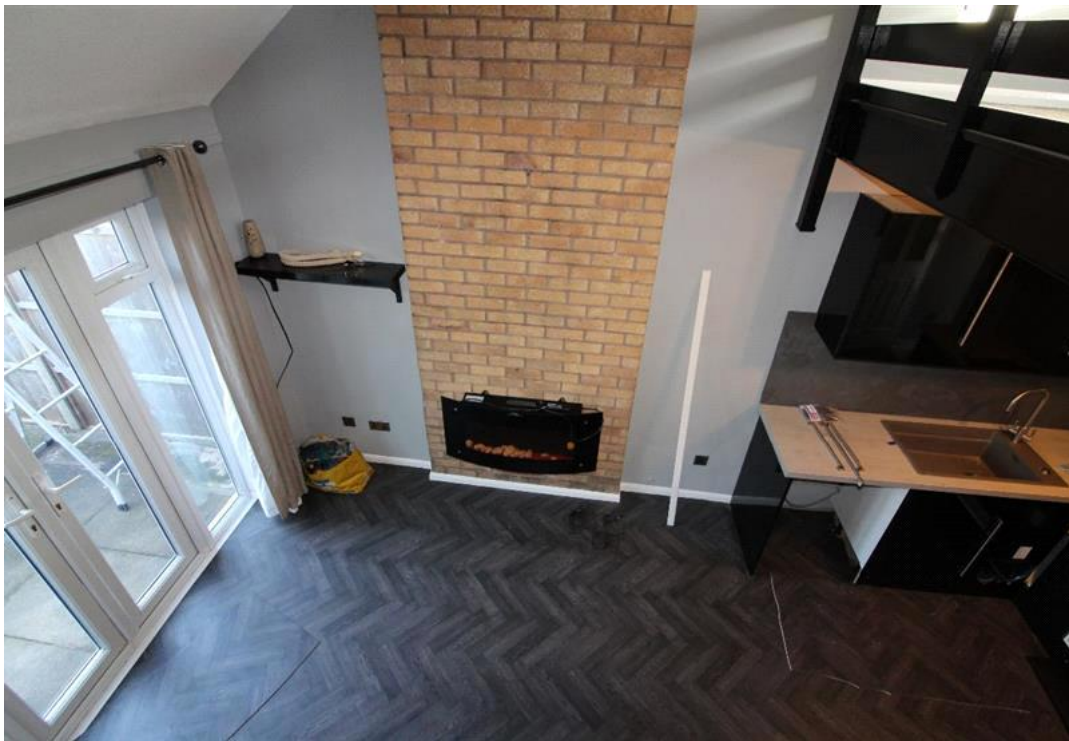
One Double bedroom with grey fitted carpet on a mezzanine floor.

Parking at front of the property

Gas Central Heating and Double Glazing.

Would suit a single professional or a professional couple.







Energy Efficiency Rating		Current	Potential
<i>Very energy efficient - lower running costs</i>			
(92-100)	A		90
(81-91)	B		
(69-80)	C		
(55-68)	D	69	
(39-54)	E		
(21-38)	F		
(1-20)	G		
<i>Not energy efficient - higher running costs</i>			
England & Wales		EU Directive 2002/91/EC	

The energy efficiency rating is a measure of the overall efficiency of a home. The higher the rating the more energy efficient the home is and the lower the fuel bills will be.

Viewing by appointment only
 JMS Property Management
 32 High Street, Hucknall, Nottingham, Nottinghamshire NG15 7HD
 Tel: 0115 9680268 Email: enquiries@jmslettings.co.uk Website: www.jmslettings.co.uk

